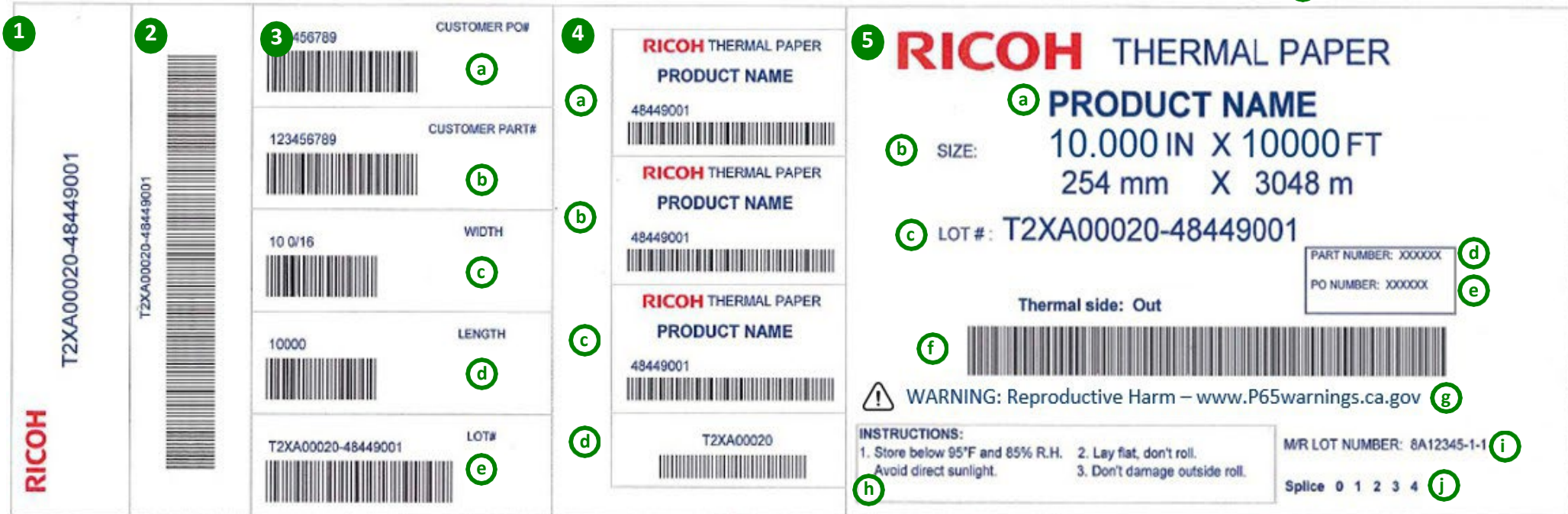
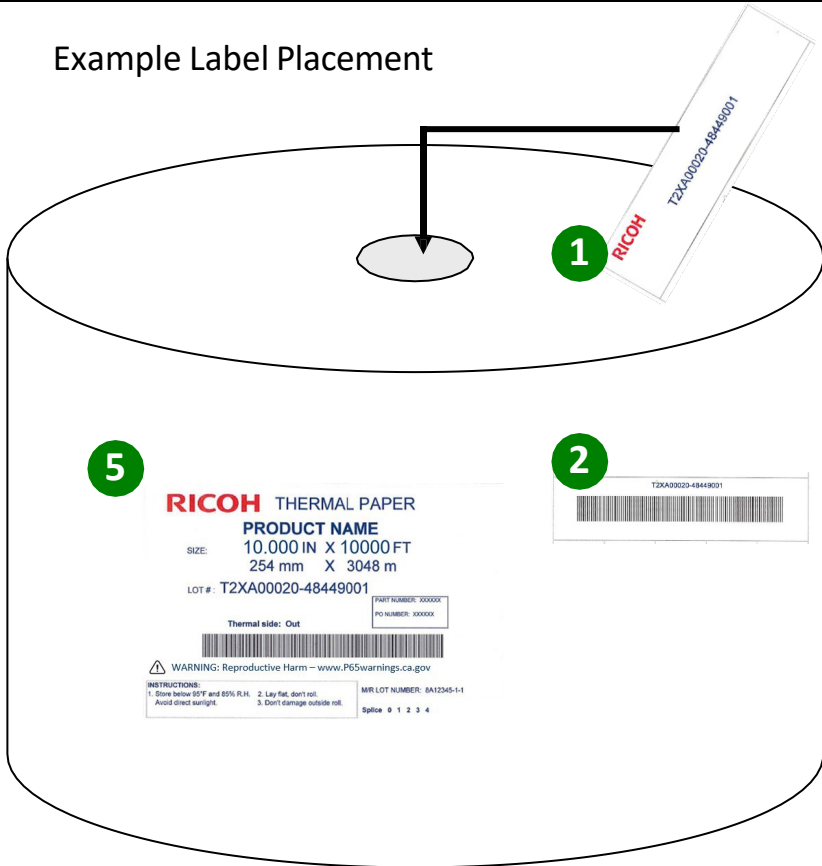


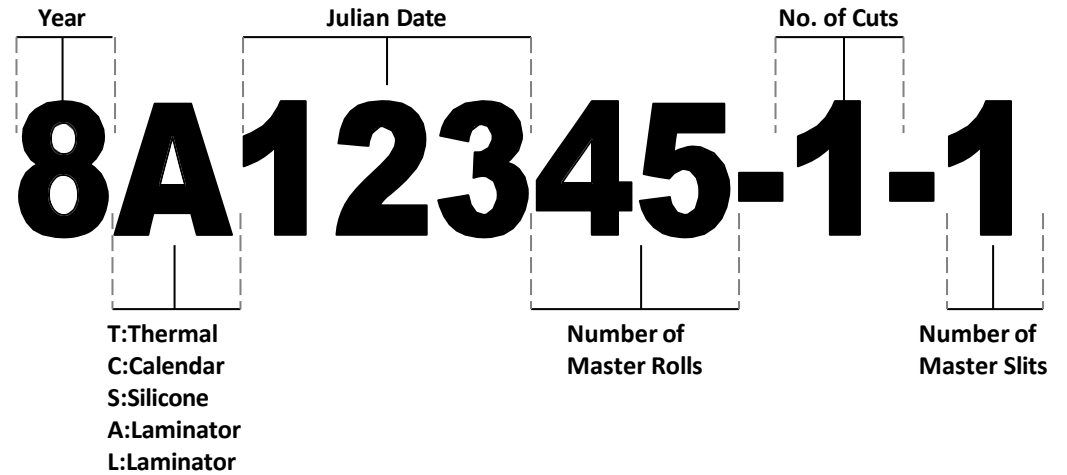
<p>1 Core Label</p> <p>This label is affixed inside of the product core. See reverse side for an explanation of the meaning of the data contained on this label.</p>	<p>2 Barcode Label</p> <p>The barcode label is affixed to the roll adjacent to the Lot Tag Label. See reverse side for a diagram for label placement.</p>	<p>3 Customer Information Label</p> <p>These labels provide customer order data related to the product.</p> <ul style="list-style-type: none"> a Customer PO number b Customer Part number c Roll width (in inches) d Roll length (in feet) e Lot # - see reverse side for an explanation of the data 	<p>4 Buddy Labels</p> <p>The Buddy Labels are generated for customer use and can be used for job tickets, paperwork, etc.</p> <ul style="list-style-type: none"> a thru c Contains product name, customer part number and bar code. d Contains lot number excluding customer part number. 	<p>5 Lot Tag Label</p> <p>The Lot Tag Label has all the information about the product. See next page for an explanation of the contents of each unique identifier.</p> <ul style="list-style-type: none"> a Identifies Product b Product Size (width x length) c Ricoh Lot # - for tracking purposes (see next page) d Special Part Number (customer's) e Customer Purchase Order Number f Complete barcode (includes lot #, part #, and roll i.d.) g Proposition 65 warning (where applicable) h Special Instructions – recommended storage conditions i Master Roll Lot Number (see next page) j # of splices within the roll
--	---	---	---	---



Example Label Placement



5 **i** Lot # Identification



5 **C** Ricoh Part # Identification

