



SPECIFICATION SHEET

This product specification sheet provides the detail to aid you in identifying the most appropriate product type to meet your company's specific requirements. Please direct questions to: **Ricoh Customer Service 1-800-843-7058**

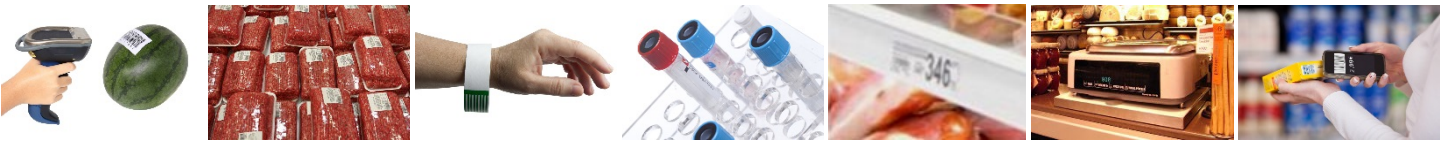
DESCRIPTION

Ricoh's 140LDS is a high sensitivity polypropylene direct thermal film stock with high image durability against most environments.

KEY FEATURES

High sensitivity, high image preservation properties; durable polypropylene base film that is tear and water resistant.

— APPLICATION AREAS —



Produce Labels

Meat Processing

Wristbands

Laboratory Labels

Shelf Tags

Weigh Scale Labels

Product ID

FACESTOCK / PRESERVATION PROPERTIES

FACESTOCK PROPERTIES

ITEM		UNIT	SPECIFICATION	TEST METHOD
Basis Weight		lbs (24x36x500 sheets)	33.2 ± 4.9	TAPPI T-410
		g/m ²	54.0 ± 8.0	
Caliper		mil	2.6 ± 0.3	TAPPI T-411
		µm	65.0 ± 9.0	
Image Color			Black	Visual Check
Image Density	(ODU)	Minimum	1.30	X-Rite Densitometer
Tensile Strength	MD	kgf/15 mm Minimum	9.0	TAPPI T-494
	CD	kgf/15 mm Minimum	15.0	
Stiffness	MD	gf-cm Minimum	0.98	TAPPI T-489
	CD	gf-cm Minimum	1.76	
Initial Activation Temperature	(O.D. = 0.2)	°F / °C	212 / 100	
Effective Activation Temperature	(O.D. = 0.8)	°F / °C	239 / 115	

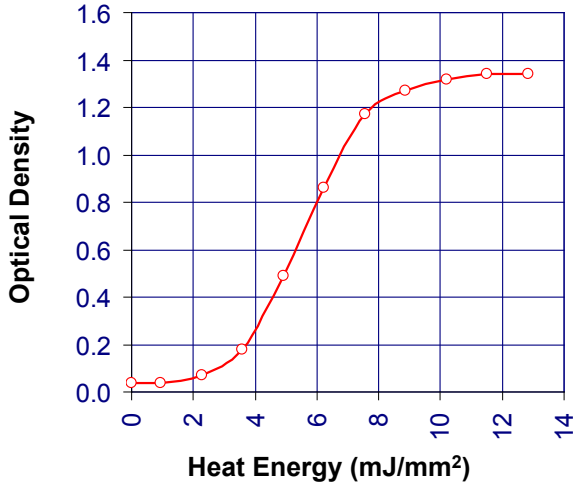
PRESERVATION PROPERTIES

ITEM	SPECIFICATION		TEST METHOD
Oil Resistance	Image	1.20 Minimum	40° C, Dry, 15 Hours X-Rite (ODU)
	Background	0.15 Maximum	
Moisture Resistance	Image	1.20 Minimum	40° C, 90% RH, 24 Hours X-Rite (ODU)
	Background	0.15 Maximum	
Heat Resistance	Image	1.20 Minimum	70° C, Dry, 24 Hours X-Rite (ODU)
	Background	0.20 Maximum	
Water Resistance	Image	1.00 Minimum	Water Immersion, 15 Hours X-Rite (ODU)
	Background	0.12 Maximum	

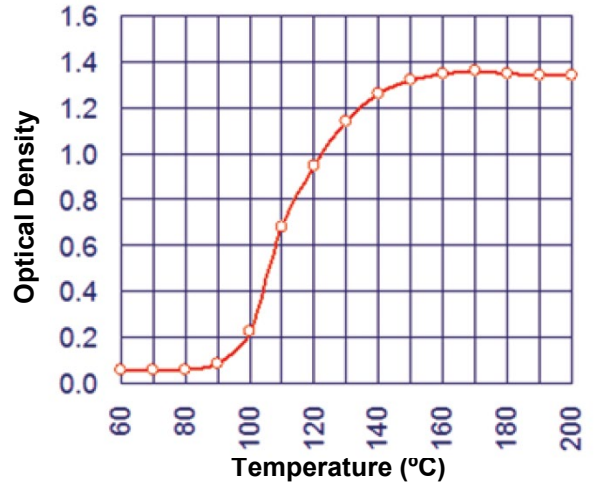


SENSITIVITY RESULTS

Dynamic Sensitivity



Static Sensitivity



Sensitivity curves are for reference only.

Storage Conditions: Below 95°F (35° C) and less than 85% R.H. in a warehouse, avoiding direct sunlight.

Tests performed on Markpoint MP104.

140LDS – LAMINATED PRODUCT

GRADE	UNIT	G8	G12	G29
Application	°F	10 to 120	-40 to 122	-40 to 122
Temperature	°C	-12 to 49	-40 to 50	-40 to 50
Service	°F	-20 to 120	-65 to 131	-65 to 131
Temperature	°C	-29 to 49	-54 to 55	-54 to 55
Basis Weight	lbs	84 ± 11	83 ± 12	80 ± 12
(24 x 36 x 500)	g/m ²	137 ± 18	136 ± 19	130 ± 19
Caliper	µm	140 ± 22	140 ± 22	138 ± 22
	mil	5.5 ± 7.0	5.5 ± 7.0	5.4 ± 7.0

Liner: 42 lbs

Caliper: 2.5 mils ± 10% (64 ± 8 µm)

Opacity: 65% Maximum (Photovolt)

Adhesive Attributes:

G8 – Tight Removable

G29 – Washable

G12 – Wide Temperature and Permanent

CERTIFICATES / REGULATIONS / DIRECTIVES

BPA Free

RoHS

ISO9001

Indirect Food Contact

REACH

WEEE

ISO14001

RICOH ELECTRONICS, INC. DISCLAIMS ANY WARRANTY OF MERCHANTABILITY OR FITNESS FOR A PARTICULAR PURPOSE IN CONNECTION WITH THE CUSTOMER'S PURCHASE OF OUR PRODUCTS. IT IS CUSTOMER'S SOLE AND EXCLUSIVE RESPONSIBILITY TO TEST AND ENSURE SUITABILITY OF OUR PRODUCTS FOR ITS CUSTOMERS' OR END-USER'S APPLICATION.

CONTACT INFORMATION

Copyright 2016 Ricoh Electronics, Inc.

1125 Hurricane Shoals Rd.

Lawrenceville, GA 30043

All Rights Reserved

Company Info

ISO14001 / ISO9001 Certified

Customer Service Department

Toll-Free 1-800-843-7058

Toll-Free Fax 1-888-873-7059

Worldwide Fax +1-770-613-6478

Email: orders@rei.ricoh.com